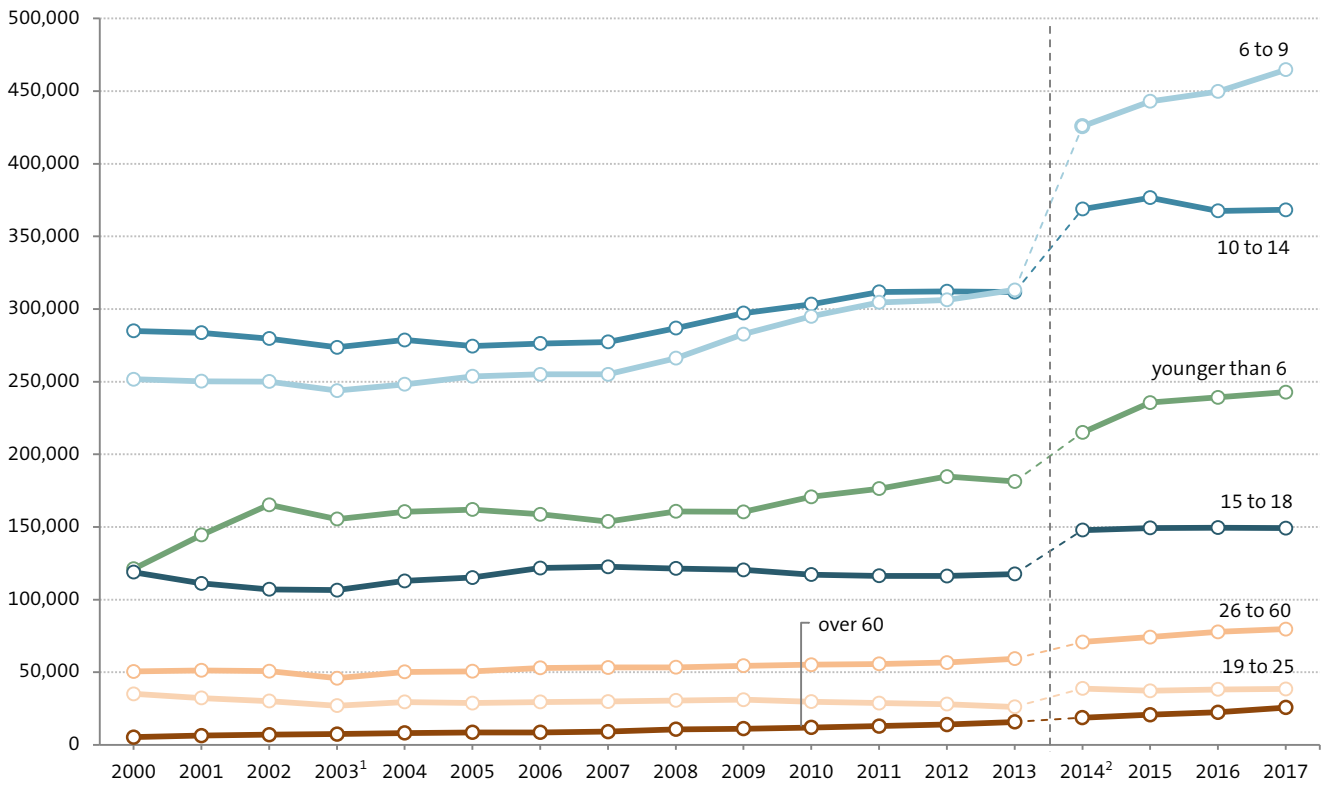
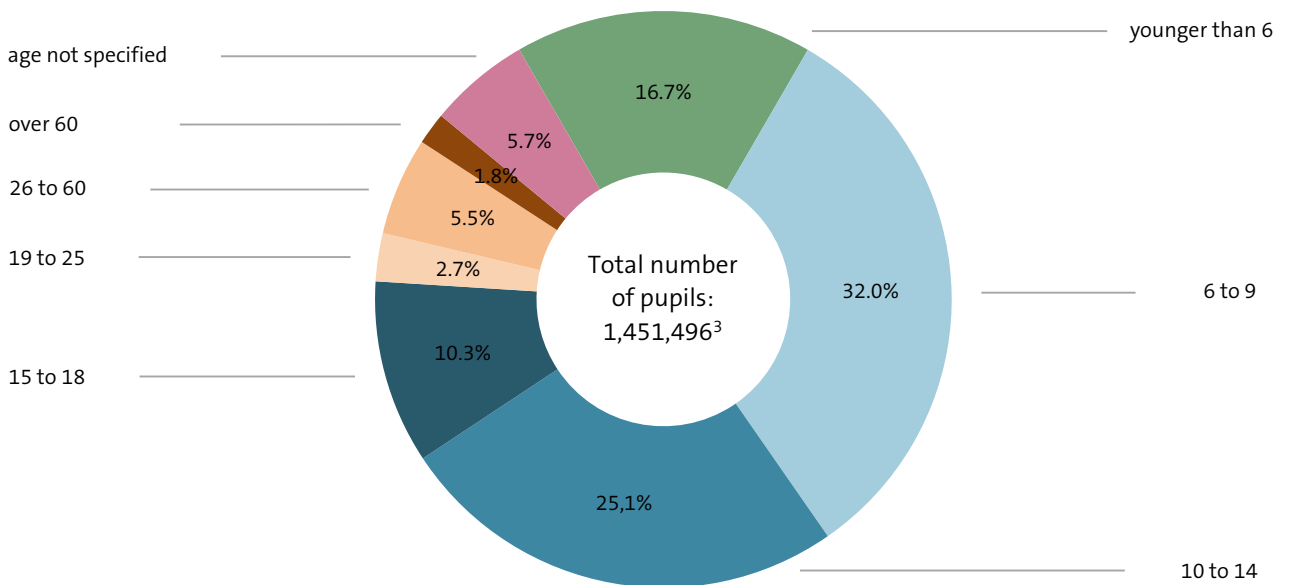


» Age distribution at public music schools in the Association of German Music Schools (VdM)

Number of pupils by age group



Percentage of pupils by age group, 2017



» Age distribution at public music schools in the Association of German Music Schools (VdM)

Year	Music Schools ⁴	Total number of pupils ³	younger than 6		6 to 9		10 to 14		15 to 18		19 to 25		26 to 60		over 60		age not specified	
			Total	%	Total	%	Total	%	Total	%	Total	%	Total	%	Total	%	Total	%
2000	980	867,961	121,260	14.0	251,735	29.0	284,968	32.8	118,898	13.7	35,150	4.1	50,562	5.8	5,388	0.6	-	-
2001	968	879,764	144,525	16.4	250,327	28.5	283,679	32.2	111,208	12.6	32,284	3.7	51,268	5.8	6,473	0.7	-	-
2002	966	890,079	165,237	18.6	250,100	28.1	279,675	31.4	107,076	12.0	30,160	3.4	50,799	5.7	7,032	0.8	-	-
2003 ¹	946	859,903	155,472	18.1	243,829	28.4	273,691	31.8	106,512	12.4	26,973	3.1	45,939	5.3	7,487	0.9	-	-
2004	939	888,347	160,515	18.1	248,187	27.9	278,740	31.4	112,869	12.7	29,567	3.3	50,298	5.7	8,171	0.9	-	-
2005	930	893,538	162,014	18.1	253,703	28.4	274,499	30.7	115,185	12.9	28,787	3.2	50,661	5.7	8,689	1.0	-	-
2006	924	903,261	158,719	17.6	255,115	28.2	276,332	30.6	121,809	13.5	29,553	3.3	53,043	5.9	8,690	1.0	-	-
2007	920	901,091	153,775	17.1	255,063	28.3	277,350	30.8	122,573	13.6	29,862	3.3	53,336	5.9	9,132	1.0	-	-
2008	914	930,007	160,764	17.3	266,156	28.6	286,828	30.8	121,465	13.1	30,626	3.3	53,420	5.7	10,748	1.2	-	-
2009	909	957,668	160,382	16.7	282,713	29.5	297,205	31.0	120,542	12.6	31,186	3.3	54,480	5.7	11,160	1.2	-	-
2010	919	983,343	170,766	17.4	295,000	30.0	303,377	30.9	117,208	11.9	29,752	3.0	55,184	5.6	12,056	1.2	-	-
2011	920	1,006,646	176,326	17.5	304,572	30.3	311,796	31.0	116,391	11.6	28,783	2.9	55,776	5.5	13,002	1.3	-	-
2012	922	1,018,378	184,703	18.1	306,299	30.1	312,271	30.7	116,283	11.4	28,119	2.8	56,653	5.6	14,050	1.4	-	-
2013	929	1,025,180	181,385	17.7	313,172	30.6	311,729	30.4	117,613	11.5	26,203	2.6	59,294	5.8	15,784	1.5	-	-
2014 ²	930	1,332,634	215,064	16.1	425,914	32.0	368,835	27.7	147,818	11.1	38,892	2.9	70,816	5.3	18,740	1.4	46,555	3.5
2015	931	1,400,483	235,598	16.8	443,024	31.6	376,655	26.9	149,291	10.7	37,290	2.7	74,244	5.3	20,837	1.5	63,544	4.5
2016	930	1,412,838	239,192	16.9	449,751	31.8	367,593	26.0	149,585	10.6	38,228	2.7	77,781	5.5	22,504	1.6	68,204	4.8
2017	928	1,451,496	242,774	16.7	464,704	32.0	368,347	25.4	149,254	10.3	38,516	2.7	79,716	5.5	25,726	1.8	82,459	5.7

Note: Figures up to and including the year 2013 are taken from 1 January of the year concerned; those after 2014 are based on a full calendar year (1 January to 31 December of the preceding year). This change of methodology has a significant impact on the number of students, for the later figures also include pupils enrolled in projects or other courses of limited duration as well as those who dropped out during the year and were thus previously excluded from statistics based on the 1 January reference day.

¹ Excluded are 12 music schools in Berlin that were not member of the VdM at the time of data collection and evaluation in 2003, comprising 37,839 pupils in total.

² As of 2014, a new methodology of data collection has been applied. See note.

³ Excl. enrolments in multiple subjects.

⁴ Number of music schools on 1 January of the subsequent year.

Source: Compiled and calculated by the German Music Information Centre from various issues of Statistisches Jahrbuch der Musikschulen in Deutschland, published annually by the VdM.