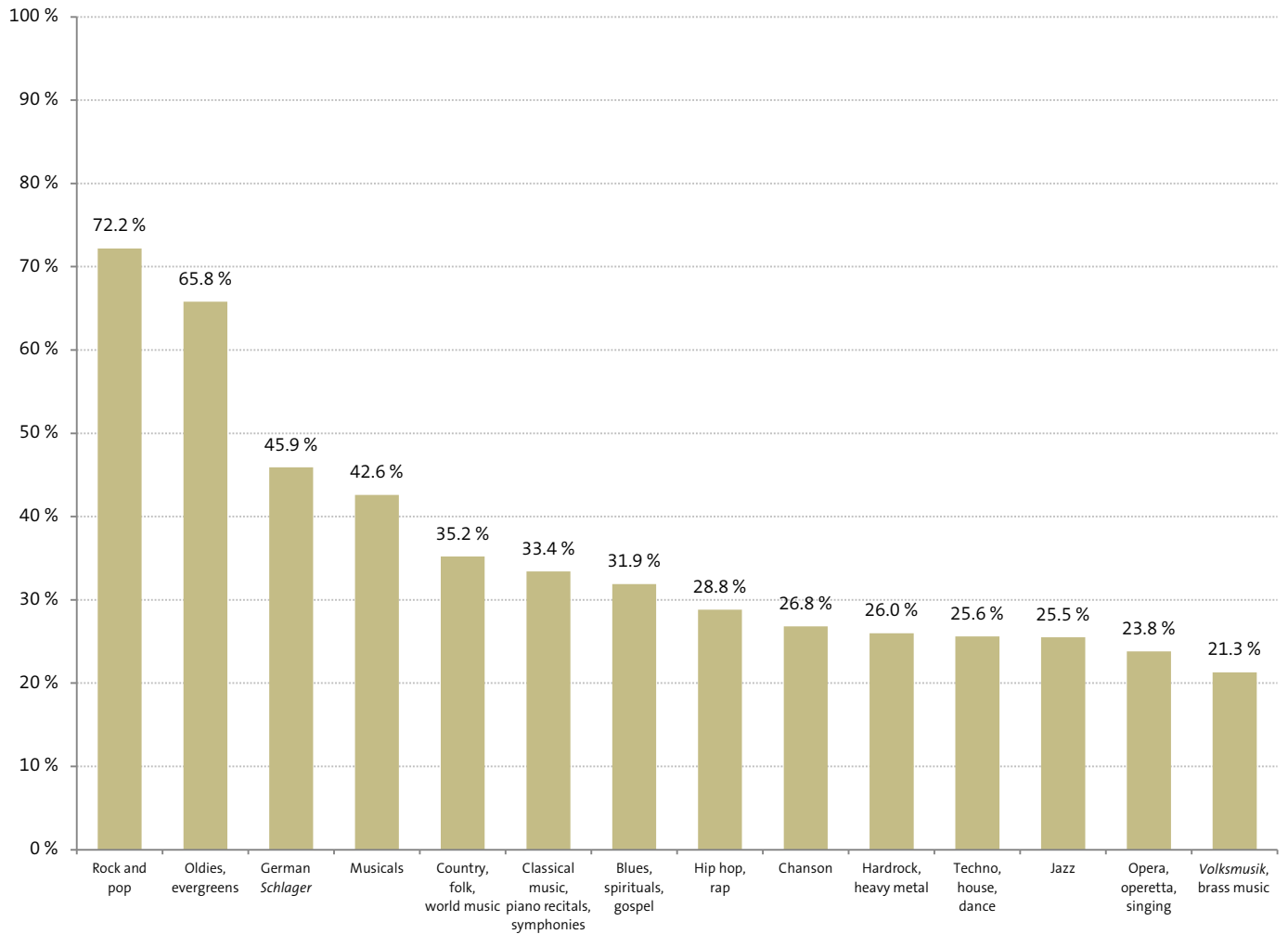


» Appreciation of various music genres by age group

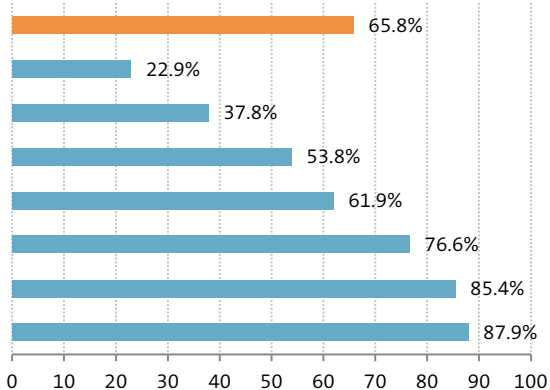
Appreciation of various music genres in the German population above the age of 14 (2022)
('like to listen very much' and 'like to listen')



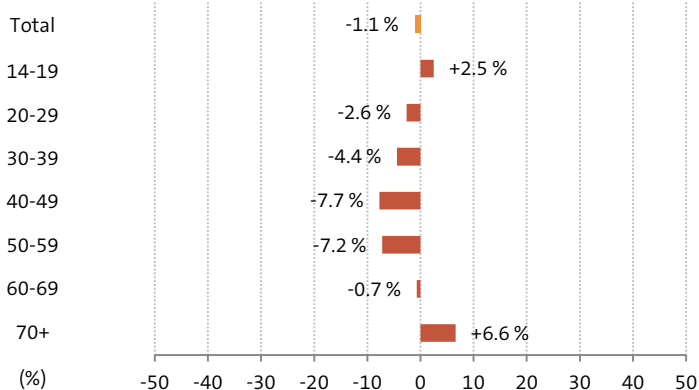
» **Appreciation of various music genres by age group**

Oldies, Evergreens

2022: 'like to listen very much' and 'like to listen'

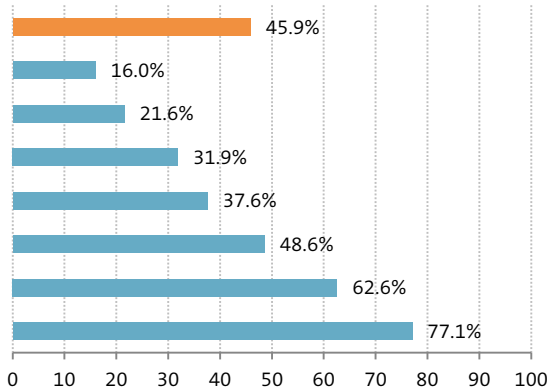


Change from 2012 to 2022

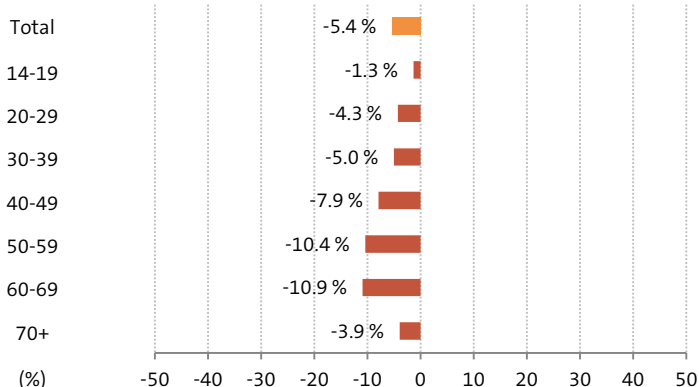


German Schlager

2022: 'like to listen very much' and 'like to listen'

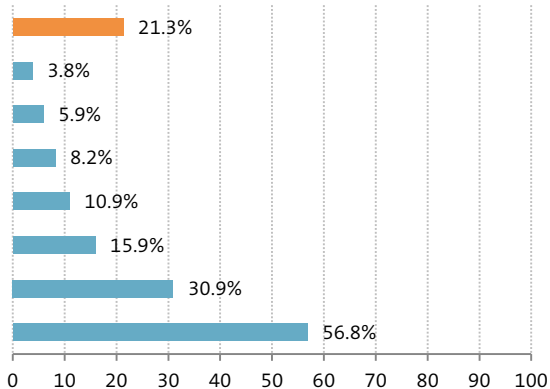


Change from 2012 to 2022

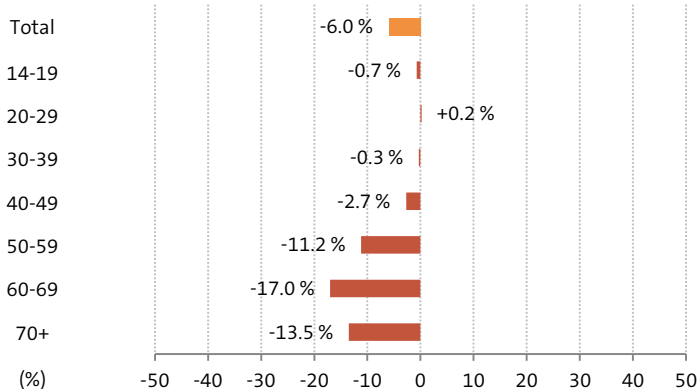


Volksmusik, Brass Music

2022: 'like to listen very much' and 'like to listen'



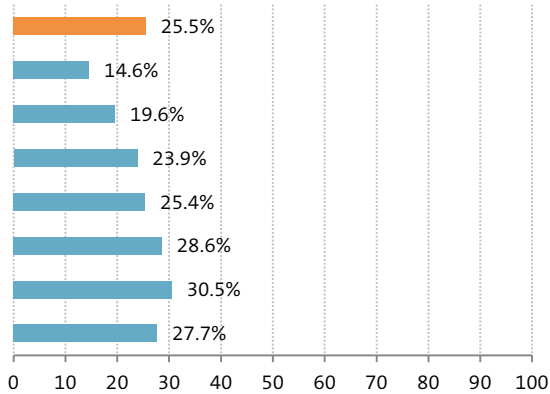
Change from 2012 to 2022



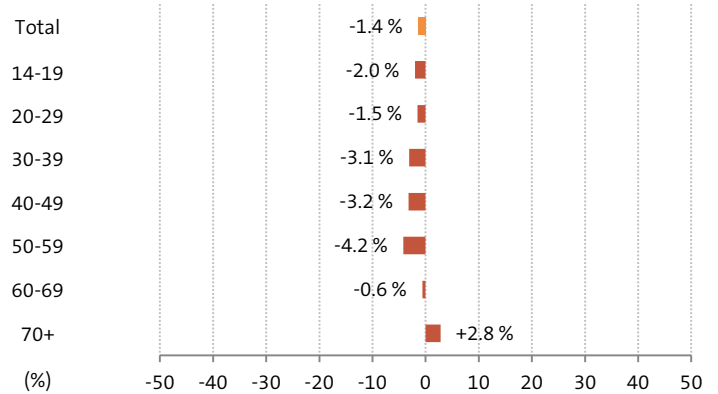
» **Appreciation of various music genres by age group**

Jazz

2022: 'like to listen very much' and 'like to listen'

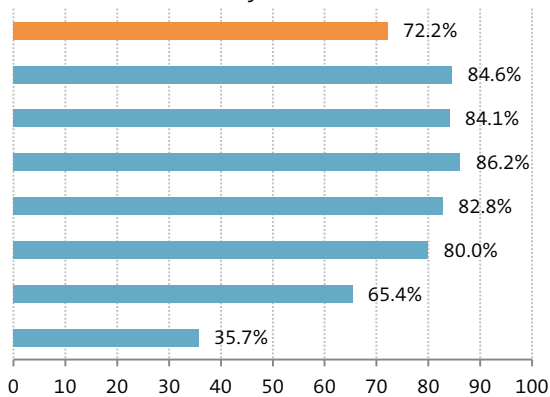


Change from 2012 to 2022

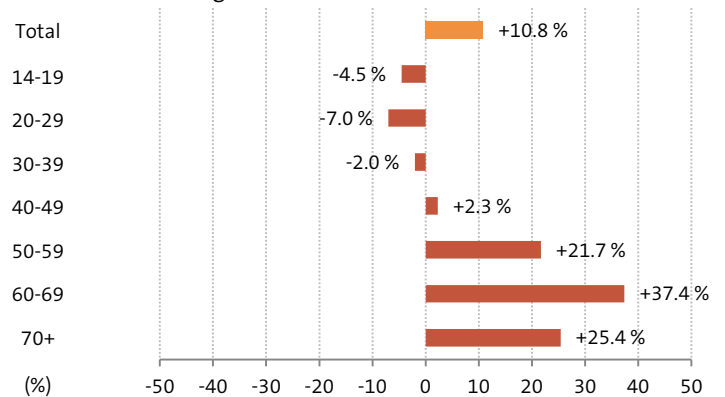


Rock and Pop

2022: 'like to listen very much' and 'like to listen'

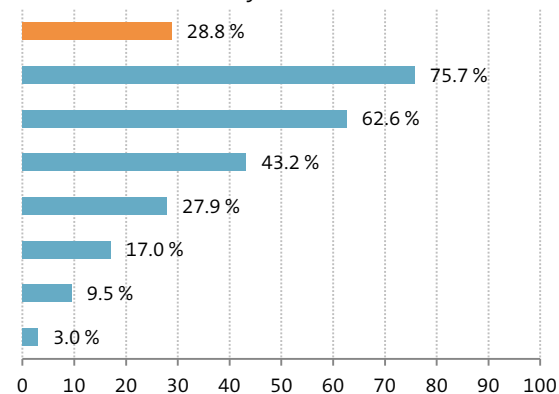


Change from 2005¹ to 2022

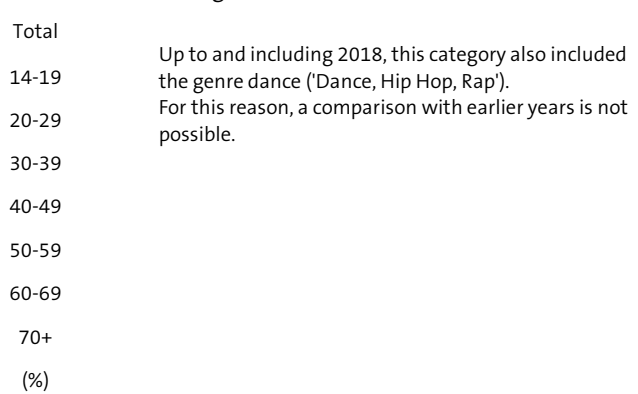


Hip Hop, Rap

2022: 'like to listen very much' and 'like to listen'



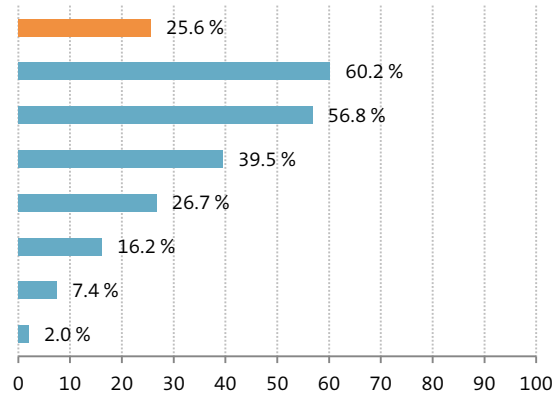
Change from 2012 to 2022



» **Appreciation of various music genres by age group**

Techno, House, Dance

2022: 'like to listen very much' and 'like to listen'



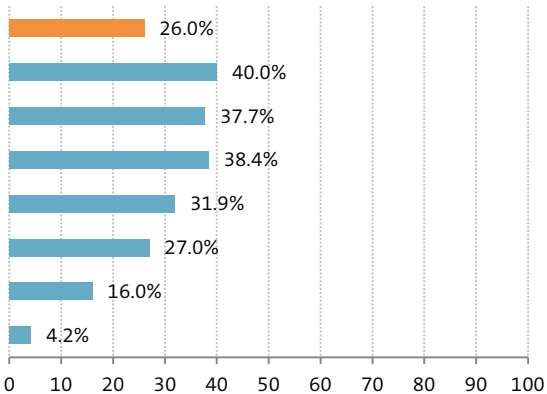
Change from 2012 to 2022

Up to and including 2018, this category did not include the genre dance ('Techno, House'). For this reason, a comparison with earlier years is not possible.

Total
14-19
20-29
30-39
40-49
50-59
60-69
70+
(%)

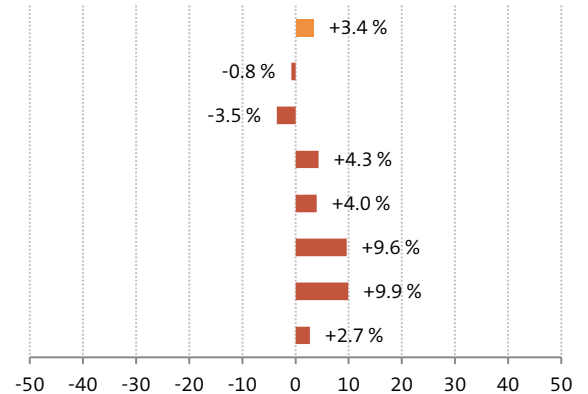
Hardrock, Heavy Metal

2022: 'like to listen very much' and 'like to listen'



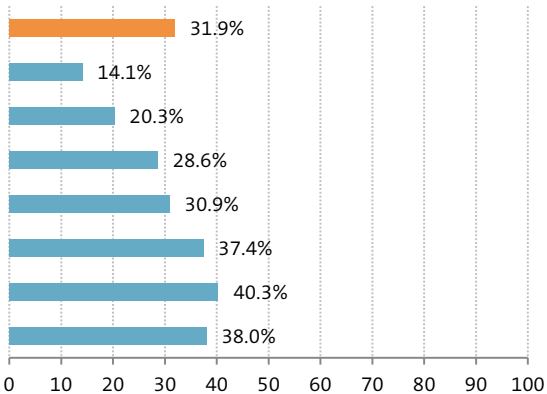
Change from 2012 to 2022

Total
14-19
20-29
30-39
40-49
50-59
60-69
70+
(%)



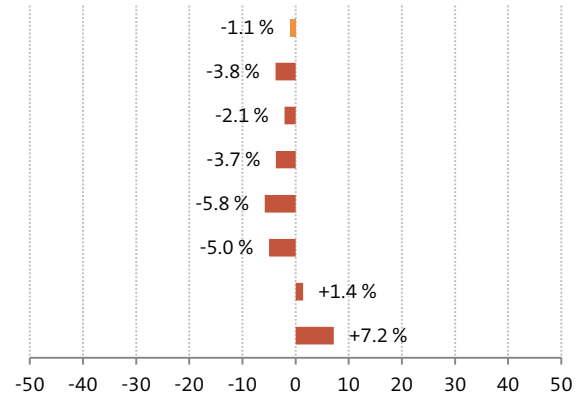
Blues, Spirituals, Gospels

2022: 'like to listen very much' and 'like to listen'



Change from 2012 to 2022

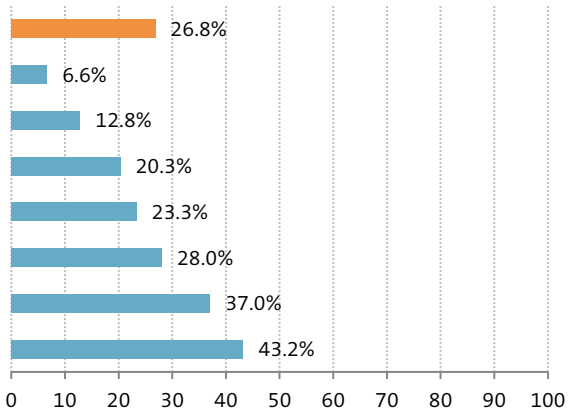
Total
14-19
20-29
30-39
40-49
50-59
60-69
70+
(%)



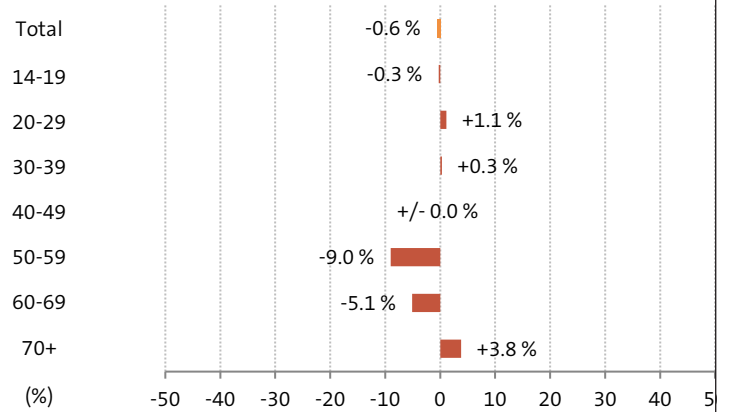
» **Appreciation of various music genres by age group**

Chanson

2022: 'like to listen very much' and 'like to listen'

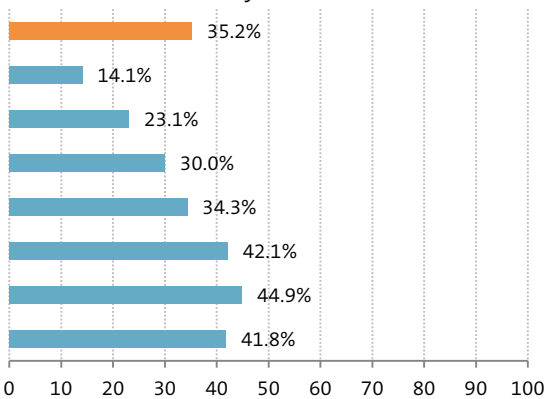


Change from 2012 to 2022

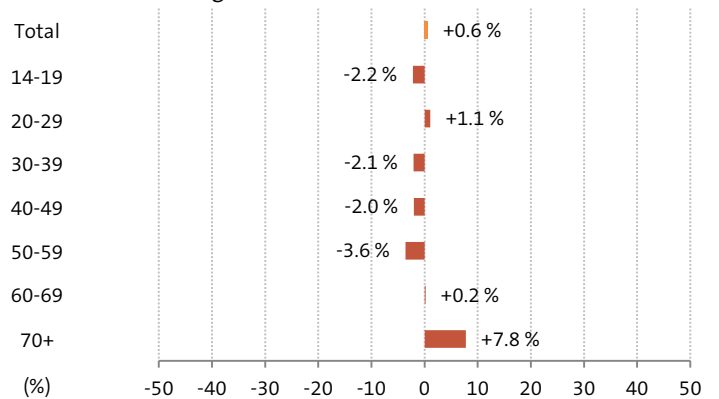


Country, Folk, World Music

2022: 'like to listen very much' and 'like to listen'

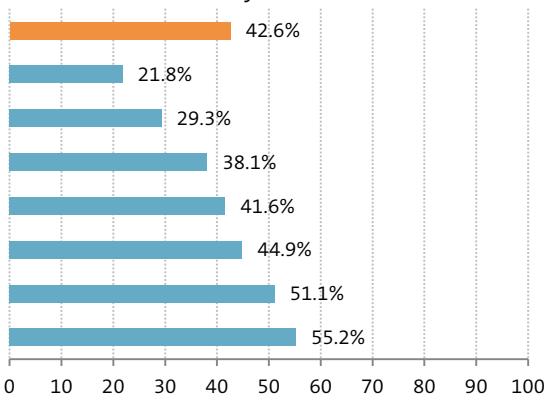


Change from 2012 to 2022

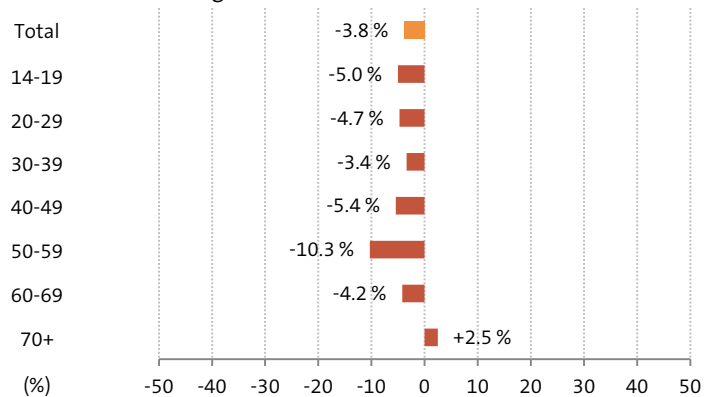


Musicals

2022: 'like to listen very much' and 'like to listen'



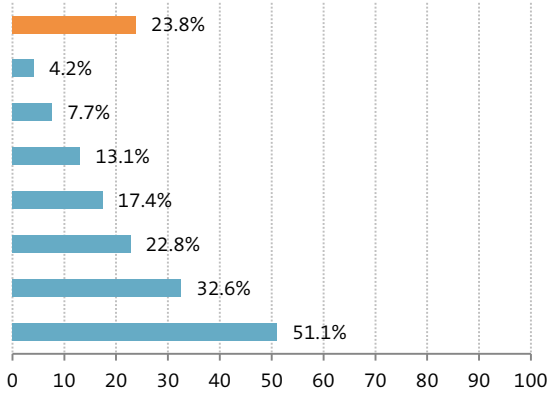
Change from 2012 to 2022



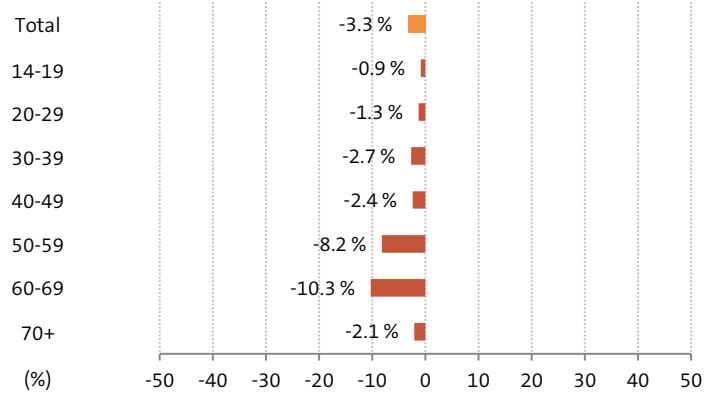
» **Appreciation of various music genres by age group**

Opera, Operetta, Singing

2022: 'like to listen very much' and 'like to listen'

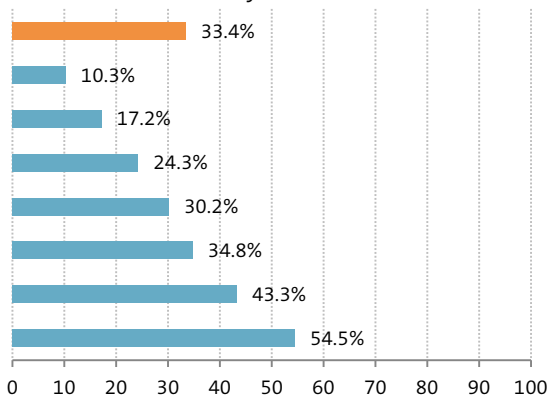


Change from 2012 to 2022

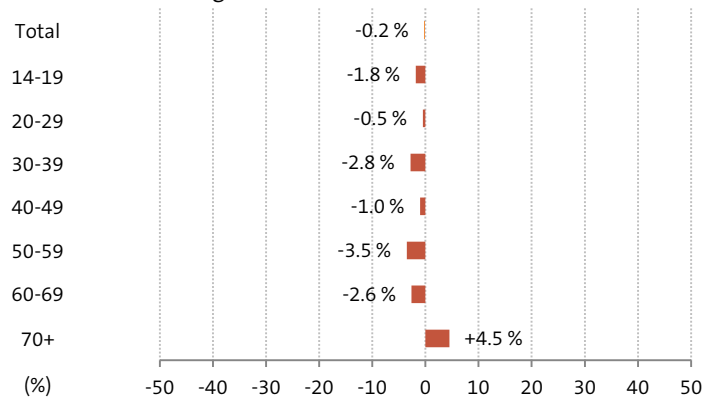


Classical Music, Piano Recitals, Symphonies

2022: 'like to listen very much' and 'like to listen'



Change from 2012 to 2022



» Appreciation of various music genres by age group

'Like to listen very much' and 'like to listen'	Year	Age group							
		Total	14-19	20-29	30-39	40-49	50-59	60-69	70+
		%							
Oldies, evergreens	2022	65.8	22.9	37.8	53.8	61.9	76.6	85.4	87.9
	2021	65.9	20.9	36.8	55.1	63.0	78.4	84.3	87.7
	2020	65.5	18.2	36.7	53.8	63.0	79.0	86.3	86.4
	2019	64.9	19.4	37.1	52.9	62.9	78.9	85.9	84.2
	2018	64.4	20.6	36.0	55.2	63.4	78.3	84.6	83.1
	2017	65.1	20.6	37.9	53.9	63.6	80.0	85.0	83.8
	2016	65.5	20.4	38.7	54.4	65.3	80.5	86.3	82.3
	2015	65.3	18.8	37.7	55.4	66.4	80.1	87.2	81.0
	2014	64.9	17.7	38.2	54.2	64.6	81.5	86.3	81.4
	2013	65.7	18.9	38.8	56.4	66.6	82.8	85.8	81.1
	2012	66.9	20.4	40.4	58.2	69.6	83.8	86.1	81.3
German <i>Schlager</i>	2022	45.9	16.0	21.6	31.9	37.6	48.6	62.6	77.1
	2021	47.4	17.4	22.6	34.4	39.2	50.6	62.7	79.4
	2020	48.5	17.5	25.3	35.1	40.3	52.5	65.3	79.0
	2019	48.9	20.3	26.3	34.7	42.6	53.2	66.2	76.9
	2018	49.0	18.6	25.7	34.8	44.5	53.5	67.0	77.1
	2017	50.0	16.6	26.2	35.4	45.1	55.9	67.9	78.6
	2016	51.8	18.9	27.2	37.5	46.8	57.5	70.5	80.0
	2015	52.1	20.7	26.7	38.3	46.7	57.8	72.6	79.8
	2014	50.5	19.0	24.1	36.6	43.1	58.2	70.9	80.0
	2013	49.9	16.8	23.9	35.3	42.7	58.0	71.4	79.9
	2012	51.3	17.3	25.9	36.9	45.5	59.0	73.5	81.0
Volksmusik, brass music	2022	21.3	3.8	5.9	8.2	10.9	15.9	30.9	56.8
	2021	22.8	3.5	6.3	8.6	12.6	17.5	33.4	59.9
	2020	23.5	4.0	7.2	10.1	12.4	19.4	34.0	60.2
	2019	23.3	5.4	7.5	9.5	11.7	19.8	33.6	60.1
	2018	23.8	5.3	6.8	9.4	11.5	19.6	37.2	61.9
	2017	24.5	4.3	6.7	9.6	12.7	19.8	38.9	63.1
	2016	25.1	4.1	6.7	9.2	14.0	20.8	39.7	64.0
	2015	25.4	4.5	5.7	9.2	13.2	22.6	41.2	65.1
	2014	25.7	4.9	5.9	8.8	11.7	23.5	41.9	67.6
	2013	26.7	3.8	6.9	8.2	12.7	25.1	44.8	69.5
	2012	27.3	4.5	5.7	8.5	13.6	27.1	47.9	70.3
Dance music (<i>'Tanzmusik'</i> ; surveyed until 2015)	2015	43.6	27.5	35.1	36.3	39.5	45.9	53.5	56.7
	2014	43.1	27.4	32.9	35.6	38.5	47.3	53.6	56.4
	2013	44.1	27.8	31.5	37.5	39.2	49.8	55.6	57.7
	2012	45.4	29.3	31.8	38.4	40.4	51.2	56.9	60.7

» Appreciation of various music genres by age group

'Like to listen very much' and 'like to listen'	Year	Age group							
		Total	14-19	20-29	30-39	40-49	50-59	60-69	70+
		%							
Jazz	2022	25.5	14.6	19.6	23.9	25.4	28.6	30.5	27.7
	2021	24.3	12.1	19.1	23.0	24.1	28.1	30.7	24.5
	2020	24.6	13.3	20.1	23.0	24.5	28.5	30.4	24.6
	2019	25.4	14.4	21.7	24.4	25.0	29.8	29.9	25.8
	2018	26.2	14.0	21.5	25.2	26.9	32.3	29.4	26.0
	2017	26.6	15.7	22.8	23.9	27.2	32.3	30.9	26.3
	2016	27.4	15.4	24.6	25.2	27.9	32.5	32.8	26.3
	2015	27.3	14.5	24.5	26.2	28.4	32.3	32.7	25.2
	2014	27.0	15.1	24.2	25.5	28.0	32.9	32.6	24.3
	2013	27.3	15.8	21.9	26.8	29.0	33.8	32.0	25.4
2012	26.9	16.6	21.1	27.0	28.6	32.8	31.1	24.9	
Rock and pop	2022	72.2	84.6	84.1	86.2	82.8	80.0	65.4	35.7
	2021	71.7	83.5	85.5	86.3	83.7	78.8	63.8	33.4
	2020	70.6	83.9	85.6	84.7	83.9	78.2	62.0	29.5
	2019	70.5	86.2	85.6	85.1	83.8	78.4	61.9	26.4
	2018	70.2	87.1	87.2	86.4	84.2	78.2	58.9	24.0
	2017	71.5	88.1	88.4	87.5	85.2	79.3	60.5	26.5
	2016	74.3	89.7	89.0	89.3	87.9	82.6	65.8	30.5
	2005	61.4	89.1	91.1	88.2	80.5	58.3	28.0	10.3
German-language rock and pop; this genre category was surveyed only from 2006 to 2015.	2015	64.0	69.7	72.6	74.9	77.8	73.4	57.7	28.3
	2014	63.2	70.0	71.9	76.1	75.9	72.2	55.8	26.9
	2013	62.7	72.8	72.7	76.9	75.2	72.0	51.8	24.7
	2012	62.0	73.9	73.8	78.2	75.4	69.4	46.9	23.1
English-language rock and pop; this genre category was surveyed only from 2006 to 2015.	2015	67.7	87.2	87.5	86.9	84.1	75.1	51.7	17.8
	2014	66.8	86.9	87.9	87.2	82.5	73.8	49.3	16.2
	2013	66.8	89.1	87.9	88.2	83.1	73.7	46.5	14.7
	2012	66.0	90.3	87.8	88.8	83.6	70.5	42.2	12.7
Hip hop, rap	2022	28.8	75.7	62.6	43.2	27.9	17.0	9.5	3.0
	2021	28.6	76.7	62.0	41.4	27.9	16.8	8.5	3.5
	2020	27.9	75.2	60.3	39.7	27.6	16.8	8.0	3.0
	2019	27.8	75.0	60.6	38.7	27.0	17.3	7.2	2.5
Dance, hip hop, rap	2018	33.9	79.6	67.5	48.3	36.2	24.0	10.4	2.9
	2017	32.8	80.2	66.0	48.8	33.8	22.2	10.1	2.4
	2016	30.2	77.5	62.0	46.0	29.2	19.9	8.6	2.2
	2015	29.2	77.8	61.9	43.7	28.5	17.3	7.0	2.3
	2014	29.1	77.3	62.6	43.9	28.5	15.7	6.3	2.3
	2013	28.5	76.4	61.6	43.0	27.4	15.3	5.0	2.0
2012	28.2	76.3	61.8	41.9	26.7	14.0	4.8	1.9	

» Appreciation of various music genres by age group

'Like to listen very much' and 'like to listen'	Year	Age group							
		Total	14-19	20-29	30-39	40-49	50-59	60-69	70+
		%							
Techno, house, dance	2022	25.6	60.2	56.8	39.5	26.7	16.2	7.4	2.0
	2021	25.2	63.3	55.0	38.2	26.3	15.3	7.3	1.7
	2020	24.9	63.5	54.7	37.2	26.0	14.9	6.7	1.6
	2019	25.0	62.5	56.4	37.2	25.0	15.0	5.7	1.7
Techno, house	2018	23.4	61.3	53.8	35.9	22.3	12.2	4.2	1.1
	2017	23.3	63.3	53.5	35.8	21.7	12.1	4.3	1.3
	2016	22.2	63.7	52.0	33.3	19.2	11.1	4.5	1.1
	2015	21.6	64.0	52.6	31.6	18.4	10.1	3.6	0.9
	2014	21.6	63.1	52.4	31.7	19.1	9.4	2.9	1.0
	2013	21.6	64.7	53.3	31.4	18.5	8.6	2.5	1.0
	2012	21.3	66.1	53.6	30.3	17.0	7.3	2.7	0.9
Hardrock, heavy metal	2022	26.0	40.0	37.7	38.4	31.9	27.0	16.0	4.2
	2021	25.8	38.6	39.3	36.8	32.7	25.6	15.0	4.8
	2020	25.4	36.9	39.0	37.4	32.9	24.9	13.5	4.3
	2019	25.0	37.5	39.8	36.4	32.2	24.1	12.8	3.4
	2018	24.7	38.1	40.7	35.5	31.5	23.6	12.0	2.5
	2017	24.1	37.4	40.4	37.1	30.1	22.5	10.4	2.2
	2016	23.0	36.5	38.4	35.5	28.7	21.1	10.2	2.1
	2015	22.4	34.9	38.8	34.5	27.5	20.2	9.1	2.0
	2014	22.6	36.5	41.4	34.9	27.7	19.2	7.8	1.7
	2013	22.9	38.4	42.2	34.4	28.6	18.9	6.9	1.7
2012	22.6	40.8	41.2	34.1	27.9	17.4	6.1	1.5	
Blues, spirituals, gospel	2022	31.9	14.1	20.3	28.6	30.9	37.4	40.3	38.0
	2021	31.0	12.4	20.2	28.0	30.6	37.8	39.8	34.7
	2020	31.1	12.0	19.8	27.3	31.4	38.7	41.5	33.3
	2019	32.4	13.5	21.7	28.2	32.4	40.8	41.2	35.3
	2018	32.8	14.6	22.5	29.7	34.2	41.0	40.3	35.3
	2017	32.7	15.3	22.4	29.2	32.9	40.8	41.9	35.0
	2016	32.4	14.8	22.5	27.9	32.9	40.8	43.4	33.6
	2015	32.4	13.9	23.5	28.2	33.6	40.9	42.6	32.9
	2014	32.9	15.3	24.6	29.8	32.8	42.9	41.6	32.8
	2013	33.6	18.2	23.5	31.6	35.5	43.4	41.2	32.2
2012	33.0	17.9	22.4	32.3	36.7	42.4	38.9	30.8	
Chanson	2022	26.8	6.6	12.8	20.3	23.3	28.0	37.0	43.2
	2021	26.0	5.7	12.0	19.0	21.7	28.2	38.6	40.9
	2020	26.2	5.1	11.7	17.8	22.5	29.3	40.1	41.1
	2019	26.8	5.7	12.3	18.3	22.1	30.8	40.3	42.7
	2018	26.1	6.5	11.4	17.8	22.2	31.4	38.3	41.4
	2017	26.5	7.0	11.7	16.5	23.3	31.7	39.8	41.1
	2016	27.2	6.2	11.7	18.3	23.8	32.5	43.2	40.5
	2015	26.9	5.4	11.5	19.4	23.1	32.9	42.7	39.2
	2014	26.7	5.9	12.5	18.4	21.6	34.5	42.2	39.0
	2013	27.1	6.7	12.1	19.5	22.4	35.5	42.1	39.2
2012	27.4	6.9	11.7	20.0	23.3	37.0	42.1	39.4	

» Appreciation of various music genres by age group

'Like to listen very much' and 'like to listen'	Year	Age group							
		Total	14-19	20-29	30-39	40-49	50-59	60-69	70+
		%							
Country, folk, world music	2022	35.2	14.1	23.1	30	34.3	42.1	44.9	41.8
	2021	35.5	15.1	22.9	30.5	36.0	42.7	46.1	40.2
	2020	36.0	15.5	24.0	30.6	36.3	44.3	47.2	39.6
	2019	36.3	14.8	25.6	30.2	35.0	45.5	48.1	39.9
	2018	35.8	14.9	25.3	30.1	35.0	45.6	46.5	39.2
	2017	35.7	17.0	24.2	30.2	34.9	46.6	46.4	38.0
	2016	36.0	17.9	25.0	30.6	35.6	46.7	47.4	36.9
	2015	35.1	16.3	23.6	30.1	35.7	45.0	47.2	36.2
	2014	34.7	16.5	22.6	29.8	34.9	45.3	47.4	35.2
	2013	34.7	16.4	22.0	30.5	36.1	46.0	46.6	34.3
	2012	34.6	16.3	22.0	32.1	36.3	45.7	44.7	34.0
Musicals	2022	42.6	21.8	29.3	38.1	41.6	44.9	51.1	55.2
	2021	42.2	22.6	29.9	38.3	41.4	45.8	50.8	52.1
	2020	44.2	23.8	32.3	37.8	43.4	49.7	53.1	54.0
	2019	45.1	23.6	33.4	40.1	43.7	50.7	54.7	54.6
	2018	45.1	22.9	33.2	42.3	44.4	49.8	54.6	54.3
	2017	45.1	25.2	33.2	40.9	44.6	49.3	54.1	54.7
	2016	45.2	25.9	33.4	40.8	45.1	49.7	54.5	54.1
	2015	45.7	24.8	33.1	40.6	46.4	51.1	55.6	54.5
	2014	45.8	24.1	33.6	39.3	45.5	53.5	55.7	54.6
	2013	46.3	25.7	34.1	40.4	45.5	55.1	55.9	54.1
	2012	46.4	26.8	34.0	41.5	47.0	55.2	55.3	52.7
Opera, operetta, singing	2022	23.8	4.2	7.7	13.1	17.4	22.8	32.6	51.1
	2021	23.7	3.6	8.0	12.2	16.1	23.4	34.9	50.3
	2020	24.7	3.6	8.4	12.3	16.0	26.0	36.5	52.6
	2019	25.8	4.5	9.3	14.0	17.1	26.6	37.5	54.4
	2018	25.8	5.1	8.8	14.6	17.7	25.9	39.1	54.0
	2017	26.0	5.2	8.6	14.4	16.6	25.7	41.2	54.8
	2016	26.2	4.8	8.5	14.8	17.3	26.2	41.4	54.3
	2015	26.6	4.4	9.2	14.0	18.8	27.0	42.2	54.7
	2014	26.9	4.6	9.5	13.5	18.5	29.1	42.4	55.1
	2013	27.2	5.4	9.1	15.4	19.2	30.9	42.6	53.9
	2012	27.1	5.1	9.0	15.8	19.8	31.0	42.9	53.2
Classical music, piano recitals, symphonies	2022	33.4	10.3	17.2	24.3	30.2	34.8	43.3	54.5
	2021	32.5	9.9	16.1	23.3	28.3	34.4	43.8	53.6
	2020	32.9	10.5	18.2	23.3	28.7	35.5	42.9	53.8
	2019	33.5	11.8	19.9	25.5	28.5	35.7	43.5	53.3
	2018	33.1	12.4	19.4	26.9	28.1	34.9	43.4	52.1
	2017	33.2	12.9	19.8	25.7	28.6	34.1	44.3	52.8
	2016	33.6	12.5	19.8	25.5	29.0	35.4	44.7	53.0
	2015	33.5	10.7	19.4	24.9	29.2	36.5	44.9	52.8
	2014	33.6	10.3	19.0	25.0	29.3	38.1	45.5	52.4
	2013	34.3	11.7	18.4	27.5	30.6	39.4	45.5	52.3
	2012	33.6	12.1	17.7	27.1	31.2	38.3	45.9	50.0

» **Appreciation of various music genres by age group**

Note: The data are conducted in a representative sample of the German-speaking population above the age of 14 (based on quota sampling procedure). Every year more than 20,000 persons (2022: 23,015) living in private households in Germany are polled at their main place of residence. The poll uses face-to-face oral interviews.

¹ Different year of comparison. From 2006 to 2015, the rock and pop genre category was split into German-language rock and pop and English-language rock and pop. For this reason, 2005 has been chosen as the year of comparison.

Source: Compiled by the German Music Information Centre from various issues of the Allensbacher Markt- und Werbeträgeranalyse (AWA), published annually by the Allensbach Demoscopic Institute.